

# Great Knit Designs

---

# Knitware

---

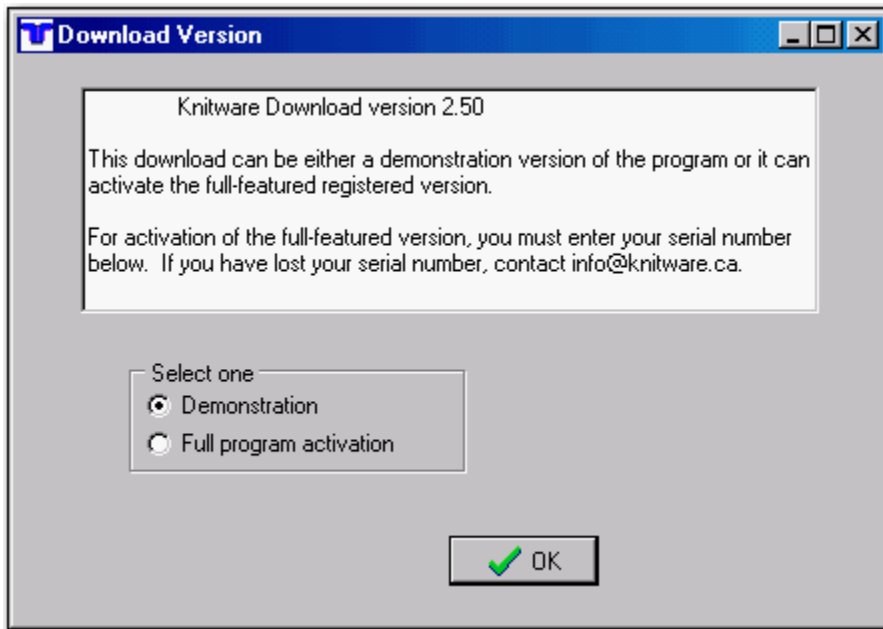
## DEMO TUTORIAL

### **Welcome to Knitware!**

This tutorial will guide you through the first easy first steps to make a Knitware **SWEATERS** pattern using the downloaded SWEATERS demo. The process is the same for **BASICS** (Critic Clothes) and **SKIRTS & SHAWLS** demo programs

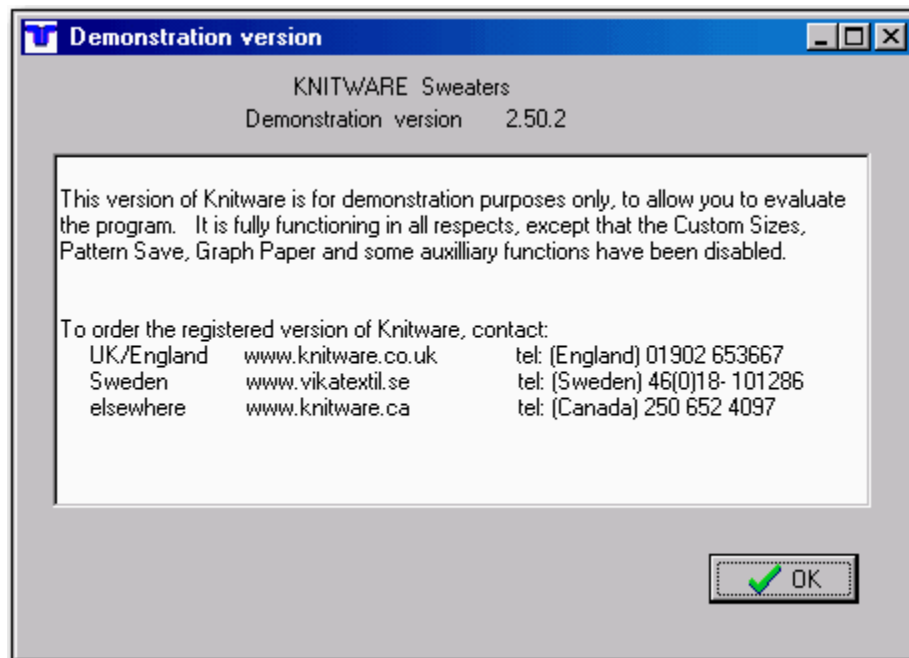
1. **Start the Knitware** program.

The Download Version screen displays:



2. Since you do not have a serial number, click **OK** to select **Demonstration** mode.

The **Demonstration Version** screen displays:



3. Click **OK** to continue.
4. On the menu bar at the top of the screen, click on the **Pattern Design** option:



A nearly-blank **Pattern Data** form shows on the left hand side of the screen:

The 'Pattern Data' form is a comprehensive data entry interface. It includes the following sections and fields:

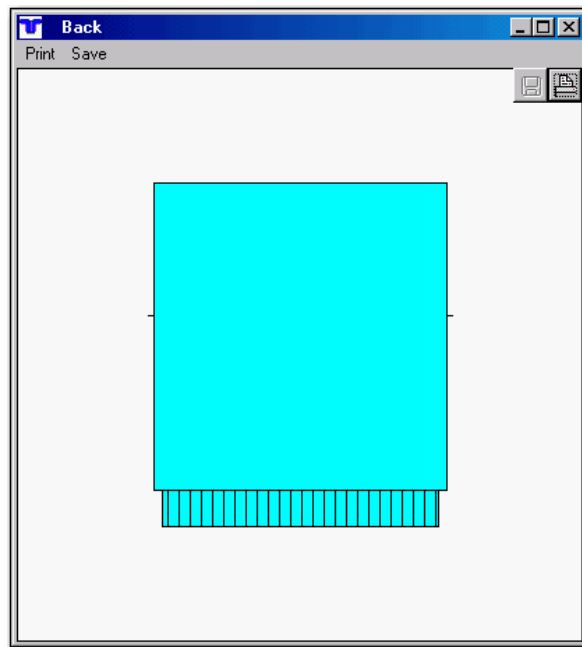
- Pattern Name:** A text field with a small 'x' icon, and a 'Designer' field containing 'Ada Lai'.
- SIZE DATA:** Includes 'Units' (ins), 'Size Type' (Standard), 'Sex' (Woman), and 'Name' (Standard Woman 36).
- YARN INFORMATION:** Includes 'Name', 'Colour(s)', 'Composition', and 'Washing' fields.
- WORKING METHOD:** Includes 'Body' and 'Hem' dropdowns, both set to 'Hand Knit', and 'Ndl Type' set to 'American'.
- TEST SWATCH GAUGE (10 cm = 4 in):** Includes 'Stitch Pattern' (Stocking Stitch), 'Needle Size' (5 and 4), 'Stitches (4")' (20), and 'Rows (4")' (26).
- BODY OF GARMENT & RIBBING:** Includes 'Needle Size' (5 and 4), 'Stitches (4")' (20), and 'Rows (4")' (26).
- STYLE COMPONENTS:** Includes 'Ease style' (Moderate), 'Shoulder Style' (Drop), 'Sleeve Style' (Moderate Taper), 'Construction' (Flat (Bottom-Up)), 'Sleeve Length' (Full), 'Sleeve Hem' (Ribbing), 'Body Style' (Pullover), 'Body Shape' (Straight), 'Front Neckline' (Round (crew)), 'Body Length' (Regular), 'Back Neckline' (Flat), 'Body Hem' (Ribbing), and 'Collar Style' (Single Band).
- FINISHED DIMENSIONS:** A table with columns for BODY, SLEEVES, and NECKLINE.
 


BODY		SLEEVES		NECKLINE	
Chest	38.4	Armhole	17.4	Top Neck	6.5
		Hem Wid	7.3	Front Wid	3.3
				Front Dep	3.6

The **Pattern Data** form contains all the pattern information, style selections, and dimension data. Use the scroll bar on the right of the form to look at all the data fields. The **Notes** field is at the bottom.


To the right are the **schematic drawings** of the pattern pieces: **Back**, **Front**, **Sleeve**, and **Collar**.

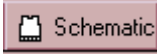


5. Click on the **Back** schematic to select it:



6. In the **Back** schematic window, click on the **Maximize** button  to view the drawing at full screen size.

**Notes:**

- ❑ When maximized, the drawing is labeled and annotated. Each dimension on the schematic is annotated with dimensions and stitches or rows.
- ❑ In any of the schematic panels, click on the **Printer** icon  in the upper right corner to print the schematics. An options screen will allow you to print out the schematics with or without annotation.



- ❑ Click on the Restore button to return to viewing the pattern data form and all the schematics.
- ❑ On the pattern data form, click the  Schematic button at any time to redraw the schematics with current values.
- ❑  or  : Click this button to change the annotation option (dimension, sts/rows or both) and grid lines on the maximized view of the schematics.

7. Click the  Pattern button to view the pattern knitting instructions.

- ❑ The **Calculate Yarn Amount** form displays.
- ❑ Click **Yes:Estimate**, then select options from the drop-down menu.
- ❑ Click **Continue**.

The pattern instructions display on the right hand side of your screen, overlaying the schematics. Note the **Amount of Yarn** calculation at the bottom of the pattern.

8. Try the following:

- ❑ Click the **Maximize** button  to view the pattern more fully and clearly.
- ❑ Use the right hand scroll bar to scroll up to the top of the pattern.
- ❑ Print  the pattern by clicking the printer icon near the top of the screen.
- ❑ You can highlight text, and use the editing functions to change fonts. The margins can also be adjusted.
- ❑ Restore the instructions to the default size again.

9. **Try customizing the pattern.** Think about how the pattern you might want to design would look, what kind of yarn you might use, what size you need.

On the **Pattern Data** form:

- ❑ Give the pattern a **Name**.
- ❑ Change the **Size** (notice that the schematics are redrawn automatically).

- ❑ Enter values for yarn information, needle size and gauge.
- ❑ Move down the form to the **Style Components** section. Change some of these fields and see how the schematics change.
- ❑ Move to **Finished Dimensions**, and change some of these fields. Note that changed fields are shown in red and that the schematics are redrawn with the new values.
- ❑ Type something in the **Notes** box.
- ❑ Click [**Pattern**] again to see how all these changes have affected the pattern knitting instructions.

***You have just created your first Knitware pattern!***

This is just a brief overview. There is so much more to Knitware: read the **Help** information, experiment, and try things out. You cannot save the pattern while running in Demonstration mode, but this is enabled once you buy the product and receive the serial number to enter in the first screen.

Enjoy!

**Questions? E-mail [support@greatknitdesigns.com](mailto:support@greatknitdesigns.com)**