
Great Knit Designs

Knitware
Installation Guide

Version 2.50.2

October 2006

Copyright and Trademark Information

Copyright © 2006 by Lai Associates, Inc. All rights reserved.

Great Knit Designs is a division of Lai Associates, Inc.

Knitware™ is a trademark of Lai Associates, Inc.

All other trademarks referenced in this document are the property of their respective owners.

Great Knit Designs documentation attempts to be accurate, but is not guaranteed to be error-free. Great Knit Designs disclaims all and any guarantees, undertakings, and warranties, express or implied, and shall not be liable for any loss or damage whatsoever (including incidental or consequential loss or damage) arising out of or in connection with any use or reliance on the material or information in this documentation. The user accepts sole responsibility associated with the use of this documentation, irrespective of the purpose for which such use or results are applied.

Authors and Contributors

Janet Tombu, Ada Lai

Contact Information

Great Knit Designs / Lai Associates, Inc.

P.O. Box 1888

South San Francisco, CA 94083-1888

USA

Tel.: (650) 491-3852

Fax: (650) 873-3331

E-mail: info@greatknitdesigns.com

Web: www.greatknitdesigns.com

Contents

- Chapter 1: Installing Knitware Programs - - - - - 1**
 - Welcome to Knitware™ Design Software! - - - - - 1
 - Getting Started - - - - - 1**
 - The Knitware Product CD - - - - - 2**
 - Trial (Demo) versus Full Program Modes - - - - - 2
 - Purchasing a Knitware License- - - - - 2
 - Product Documentation - - - - - 3
 - Downloading Knitware for Installation - - - - - 4**
 - Extracting the Knitware Files from a Downloaded File- 11
 - Preparing to Install Multiple Knitware Programs - - - - 13
 - Don't Forget the Documentation!- - - - - 13
 - Installing Knitware - - - - - 15**
 - Starting the Knitware Program - - - - - 22**
 - Running Knitware in Demonstration Mode- - - - - 25
 - Moving Forward with Your Knitware Program - - - - - 27**
 - Contact Information - - - - - 27**
- Chapter 2: Uninstalling Knitware - - - - - 29**

Great Knit Designs

Chapter 1: Installing Knitware Programs

Welcome to Knitware™ Design Software!

The Knitware Design software suite includes three programs:

- **SWEATERS:** allows you to design an almost-infinite number of sweater styles for men, women, and children in sizes ranging from infant newborn to adult size 56.
- **SKIRTS & SHAWLS:** allows the design of numerous skirt styles for the same range of human sizes as supported by SWEATERS. Also enables design of shawls, scarves, afghans, and more in a variety of shapes
- **BASICS:** allows you to design sweaters for dogs and other 4-legged pets, and garments for dolls, stuffed animals, and even humans (very limited selection of human garments)

Getting Started

If you have the product CD and plan to install the program from the CD, start with [“The Knitware Product CD” on page 2.](#)

If you plan to download the program, start with [“Downloading Knitware for Installation” on page 4.](#)

The Knitware Product CD

The product CD for Knitware includes all three programs, with each program residing in its own folder on the CD, ready for installation.

Trial (Demo) versus Full Program Modes

Each program installs in **trial (demo) mode**. The Knitware trial programs are almost completely enabled for all functions. The following functions are disabled when running in “demonstration mode”:

- ❑ Custom sizes (you can still adjust patterns generated for “standard” sizes)
- ❑ Gauge-relative graph paper (the gauge-relative grid can still be generated on pattern schematics.)
- ❑ Hat calculator
- ❑ Round yoke shaping (as a “calculator”; it can still be generated in a pattern design)
- ❑ Conversion of pattern data files from older versions of Knitware
- ❑ Multiple designers
- ❑ Saving pattern data in the internal program database (can still save schematics and instruction text in external files)

A Knitware program is activated into **full program mode** by entering a **serial number** when the program is started. The serial number is provided when you **purchase a license** for the program.

Purchasing a Knitware License

To purchase a license for one or more Knitware programs, please visit our website, www.greatknitdesigns.com. You may also pur-

chase the program through one of our resellers or agents, as noted in the “Ordering Info” pages of the website.

Product Documentation

The Knitware product CD also includes documentation for the Knitware programs. This documentation includes:

- ***Knitware Demo Tutorial:*** This book presents a quick tutorial on using a Knitware program, from startup through design of a simple pattern. Although this tutorial focuses on the Knitware trial (demo) programs, it is applicable to full, licensed Knitware programs.
- ***Knitware Getting Started Guide:*** With this book, you can proceed past the tutorial to become more familiar with your Knitware programs.
- ***Knitware User Manual:*** This is the main reference book for the Knitware programs. The content of this book is the basis of the content of the online help provided with all Knitware programs.
- ***Knitware Installation Guide:*** the PDF file of this document that you are reading.

All documentation files are provided as Acrobat PDF files, and are formatted for easy reading on a monitor, as well as for successful printing (one-sided or two-sided) with any standard printer on either 8.5"x11" paper or A4-sized paper. To open these files, you will need to download the latest Acrobat Reader from www.adobe.com.

Note: Be sure to read through the ***Tutorial*** and ***Getting Started Guide***. These two books will help you in having a successful start with the Knitware programs!

Note: All documentation is also available as downloads from www.greatknitdesigns.com. It is a good idea to check there periodically for updated documentation

Downloading Knitware for Installation

Note: This procedure assumes that you are connected to the Internet and can get to the www.greatknitdesigns.com website

Before beginning this procedure, please make sure you have at least 5-8 MB of available space on the hard disk drive of your computer system.

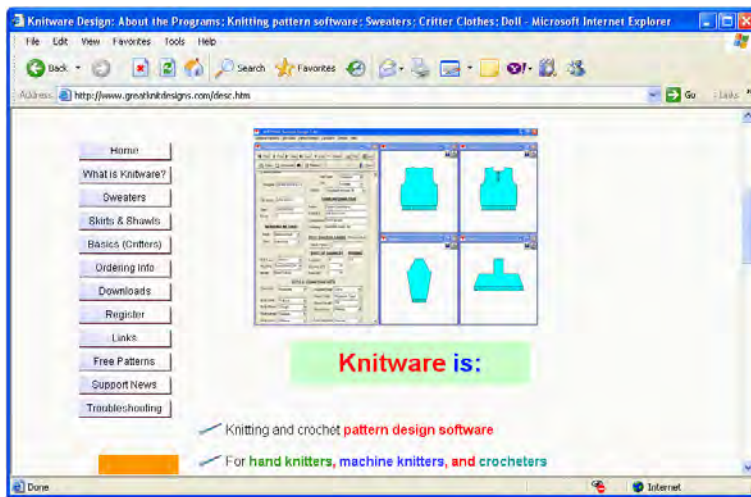
To install Knitware from a download:

1. Through your Internet connection and browser, go to www.greatknitdesigns.com.



2. Enter the site by clicking the Knitware logo or appropriate links.

A navigation bar appears on the right side of whatever web page you clicked into. For example, if you click the Knitware logo to enter the website, The general "Knitware is:" page displays with the navigation bar on the left side:



3. In the navigation bar, click the **Downloads** button:

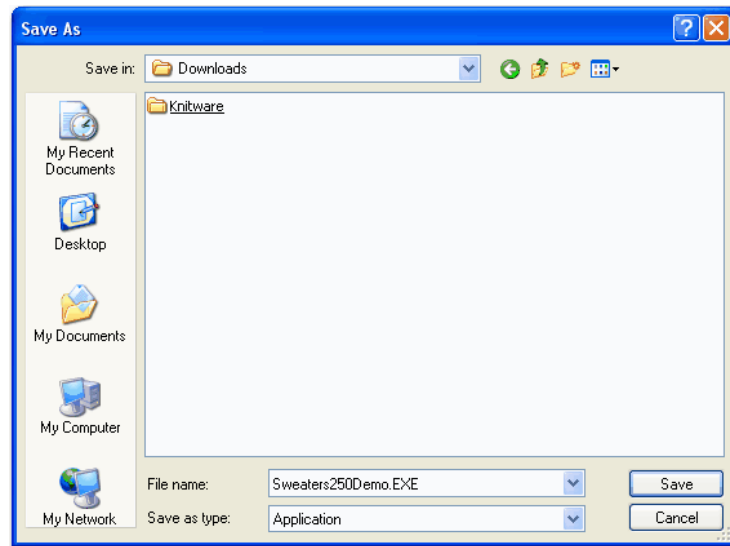


The Downloads page appears:

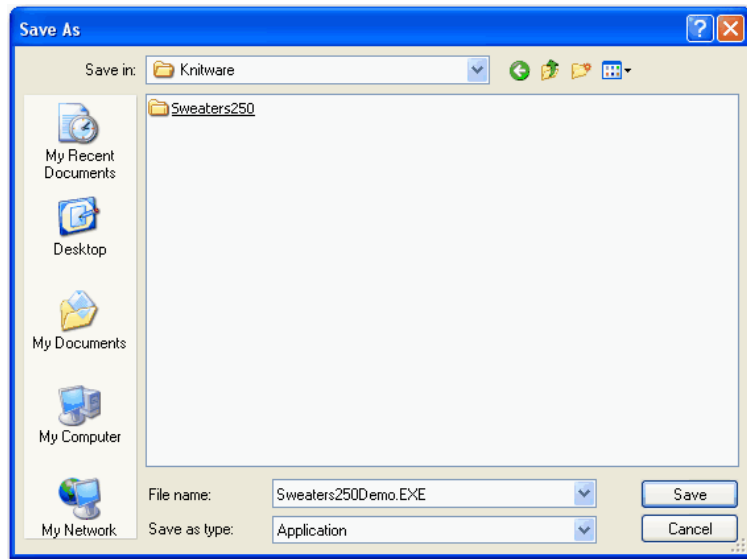


IMPORTANT: Before you download anything, you need to create a folder on your computer to accept the downloaded file. You can use Windows Explorer to create the folder, as shown in the following steps:

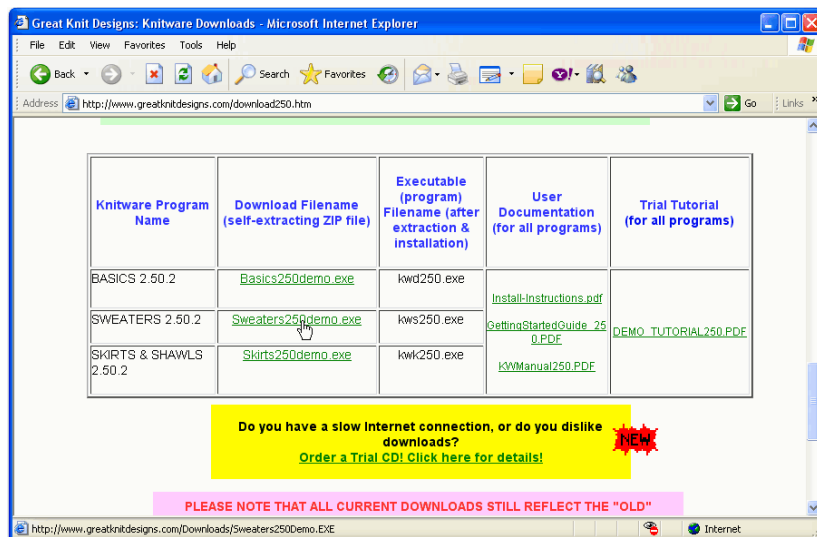
4. On your computer, start Windows Explorer.
5. In Windows Explorer, create a folder called *Downloads* on your C: or D: drive.
6. In the *Downloads* folder, create a subfolder named *Knitware*.



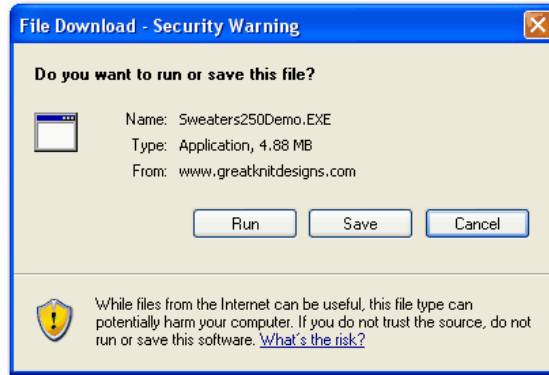
7. Still in Windows Explorer, click into *Knitware* and create a subfolder for the file you wish to download. [It is suggested that you name the subfolder with the name of the program—*BASICS*, *SWEATERS*, or *SKIRTS&SHAWLS*—that you are planning to download.]



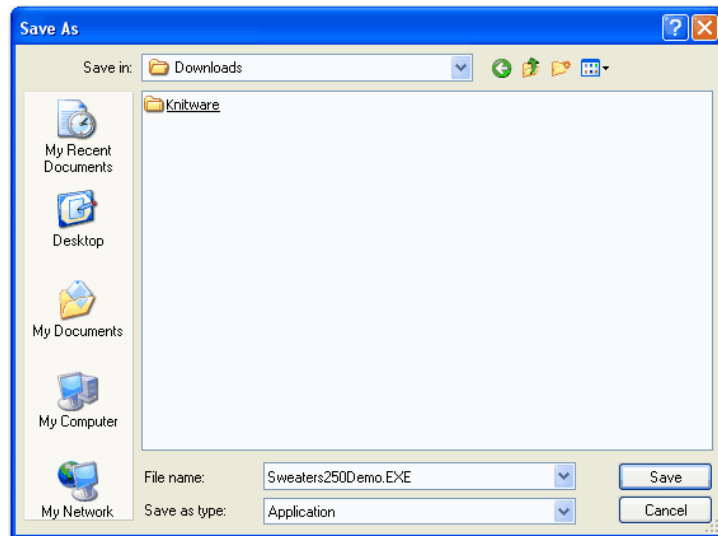
8. Repeat steps 5 and 6 for each program you plan to download.
9. Back in your browser, scroll the **Downloads** page until you see the download filenames.



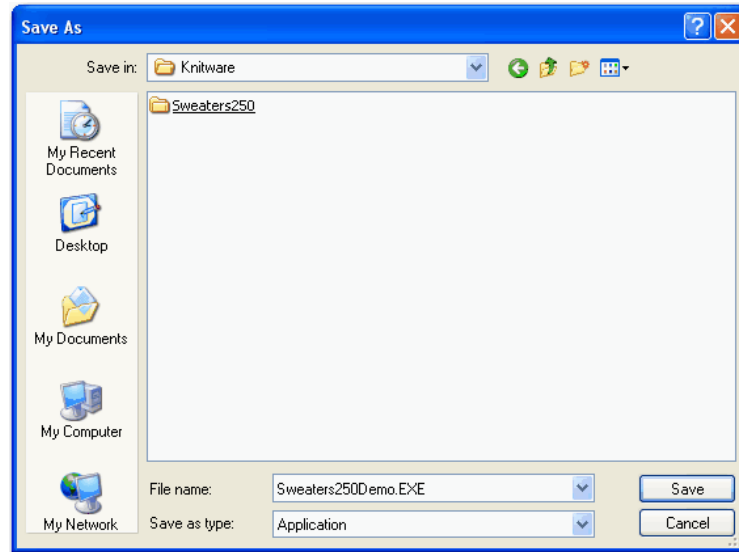
10. Click the linked name of the first program you want to download.
11. When you are asked to open or save the file, click **Save**.



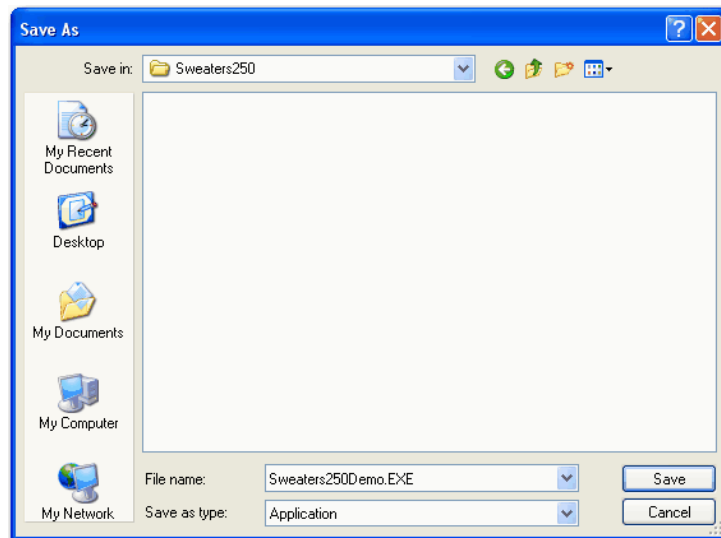
12. In the navigation box that appears, navigate to the download folder that you just created in steps 5 through 7:
 - a. First, navigate to the *Downloads* folder, where you will see the *Knitware* folder:



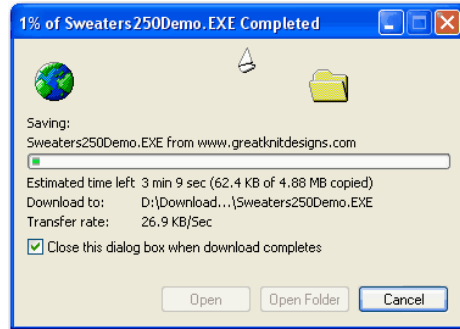
- b. Click on the *Knitware* folder name to enter it. You should see the folder or folders you created for the product you are downloading. In the example below, this is the *Sweaters250* folder:



You should now see the empty folder, ready to accept the download:



13. Click **Save** to begin the download. A download progress box displays:



Each of the program download files is about 5 MB, so the download of each file may take some time if your Internet connection is slow.

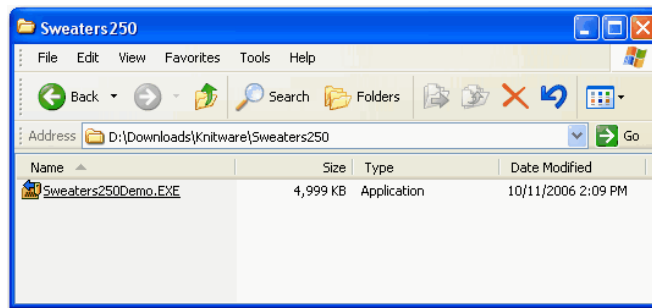
Note: If you use a dial-up connection to the Internet, large downloads like this quite often terminate prematurely, with no notice or message for you, the user.

So, when the download completes, look at the file size of the downloaded file and make sure that it is at least 4.6 MB (4,600 KB).

If the file size is not at least 4.6 MB, it is no good, so you need to start the download again.

When the download is completed, and you have checked that the file size is correct, you need to extract the files so you can start the installation.

The following image shows a successfully-downloaded Sweaters product file. Notice that the size of this file is 4,999 KB — since $5,000\text{KB} = 5\text{ MB}$, this means that the complete 5MB file downloaded successfully. You should always see some number close to 5,000 KB after you have downloaded the desired Knitware file.



Extracting the Knitware Files from a Downloaded File

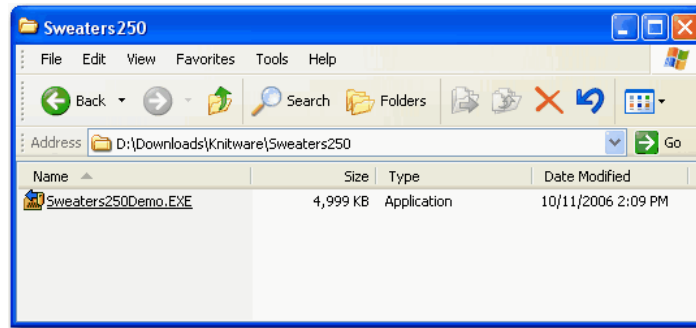
Each of the Knitware download files is a **self-extracting executable file**. What this means is that each download file is a Windows program (also called an **application program**).

When you double-click the name of an application program in the Windows Explorer, the program will execute. For this reason, program files are also called **executable files** and always have a file type of `.exe`.

A self-extracting executable file starts out as a file that contains the compressed images of a large number of files. The compressed images are created through a special program called **WinZip**. When the download file is created, a small program is added to it that will automatically un-compress and “extract” the ZIPped files into your download receiving folder. This makes the file a self-extracting executable file.

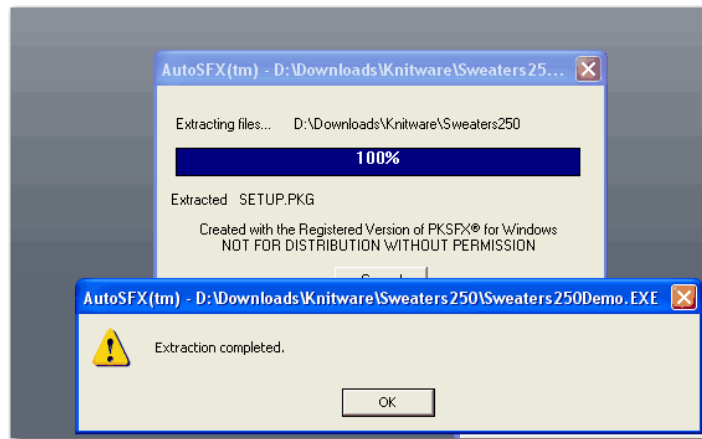
To extract the Knitware files for installation:

1. In Windows Explorer, navigate to your download receiving folder. You should see your downloaded file there.

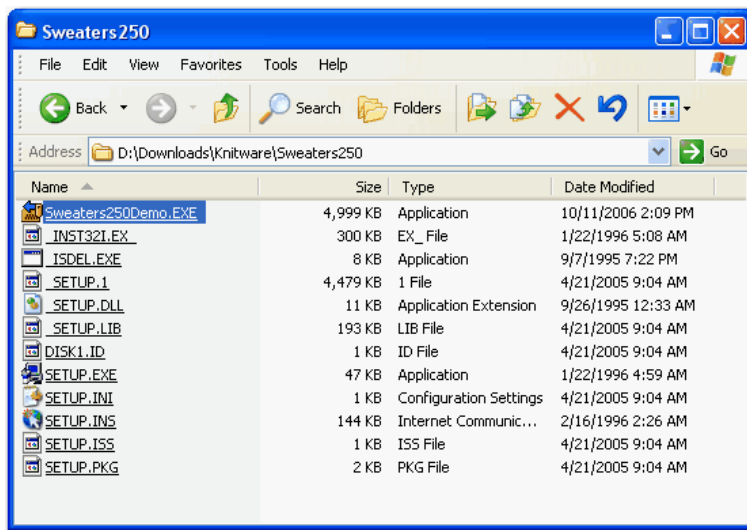


2. In the Explorer window, double-click the name of the downloaded file. When the extraction starts, it displays a progress box.

When the completion statement appears, click **OK**.



The downloaded file runs and extracts the Knitware files into the folder. When it is finished, you should be able to see all of these files in the folder through Windows Explorer.



Preparing to Install Multiple Knitware Programs

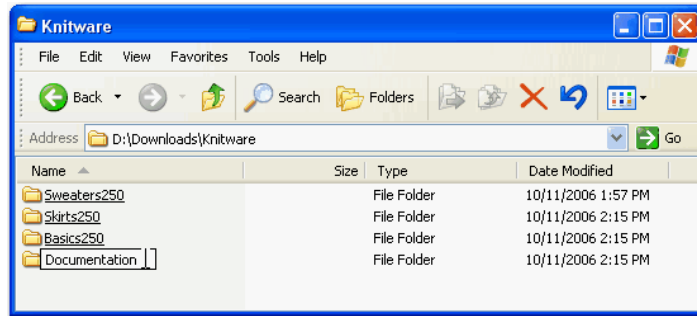
If you plan to install more than one Knitware program, you should download each file into its own folder, then extract the files for that program into the download-receiving folder.

This is recommended because it is desirable (but not required) to install the multiple programs in a specific order, as described in [“Installing Knitware” on page 15](#).

Don't Forget the Documentation!

When you download the Knitware programs (even if you just download one program), be sure to also download the documentation files as well.

Note: It is not necessary to create a unique receiving folder for each documentation file. All of the documentation files can be downloaded into the same receiving folder.



Installing Knitware

If you are reading this, then you should be at one of the following points in time:

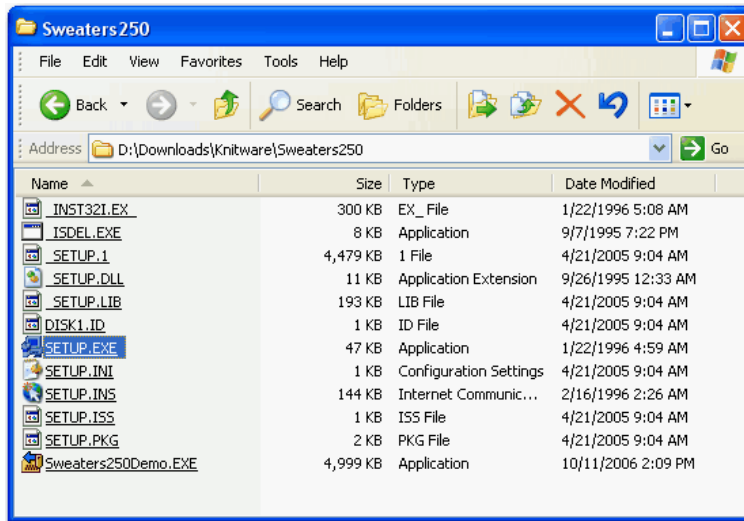
- You have downloaded a Knitware program from the www.greatknitdesigns.com website into a folder on your computer's hard disk, and extracted the files from that download into the same folder, as described in "[Downloading Knitware for Installation](#)" on page 4.
- You have a product CD (described in "[The Knitware Product CD](#)" on page 2) and have placed the CD in the CD drive.

Note: If you are planning to install more than one Knitware program, and one of those programs is the BASICS program, it is recommended—but not required—that you install BASICS first, followed by either or both of the other programs (in any order)

You can now proceed with the installation of Knitware:

1. Start Windows Explorer.
2. Do one of the following:

- If you are installing from the Product CD, navigate (through Windows Explorer) to the folder that holds the program.
- If you are installing from the download, navigate (in Windows Explorer) to the folder in which the download—and the extracted files—are located.



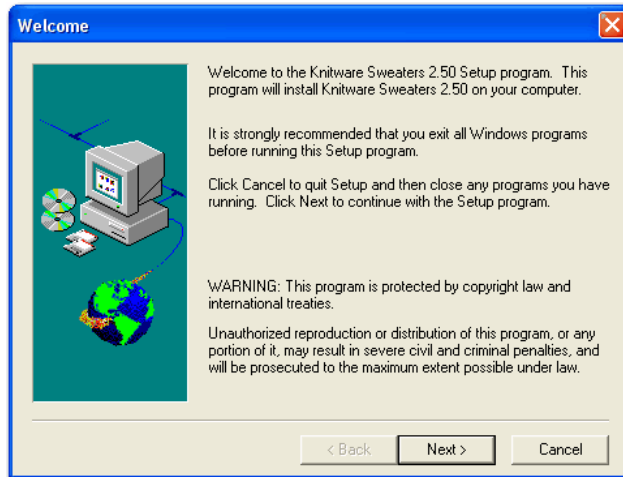
3. In Windows Explorer, find **setup.exe** and double-click it to begin the installation.

Note: There are numerous “**setup**” files in this folder, but only one with the .exe file type.

If you cannot see the .exe file type in your Windows Explorer, it is because Explorer has been set to hide the file types.

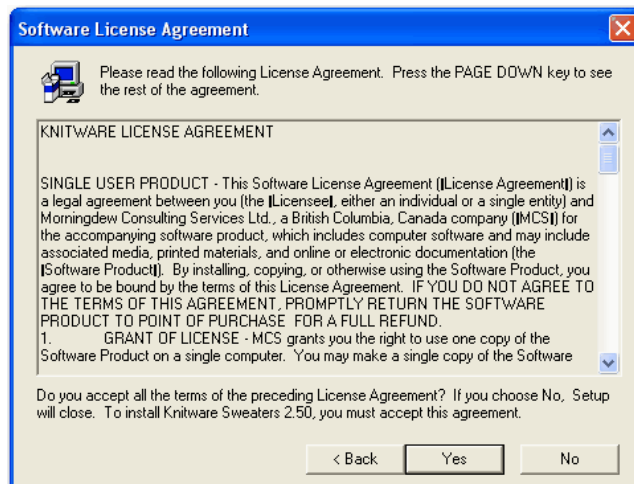
You can just look for the setup described as an “application file”, or you can change the folder options in Windows Explorer not to hide the file types. See your Windows Help on how to do this.

- The installation is performed through a process called InstallShield. The first screen displayed is the **Welcome** screen:

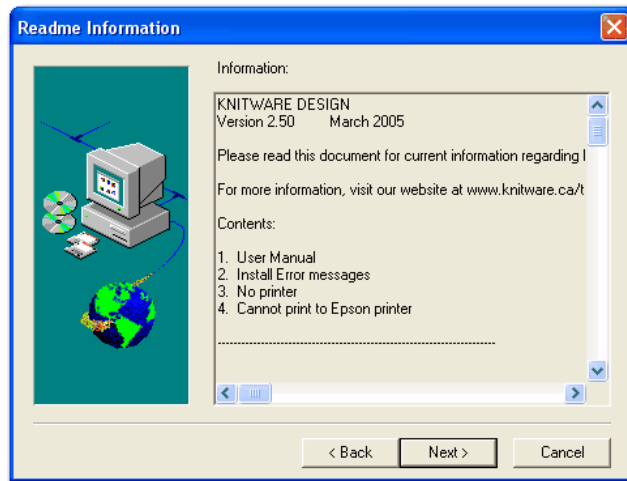


On the **Welcome** screen, click the **Next** button.

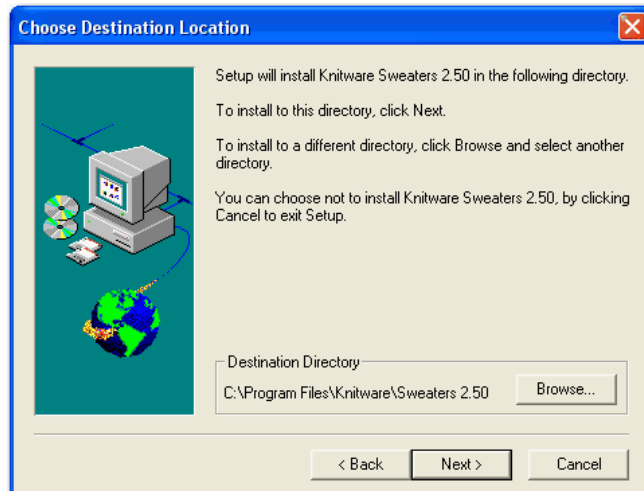
The **Software License Agreement** screen appears.



- If you wish, scroll through to read the Software License Agreement, then click the **Yes** button to accept the agreement and proceed to the **Readme Information**:



6. Click **Next** when you are ready to proceed to **Choose Destination Location**:

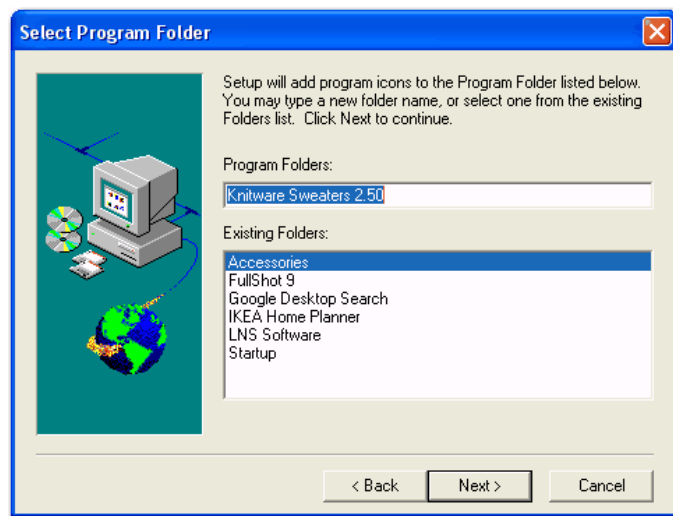


IMPORTANT: It is recommended that you accept the default destination location as shown on this screen. If you do wish to change it, click the **Browse** button to take you to a series of dialogs that will allow you to specify a different location. **Please do this only if you are very familiar with using Windows.**

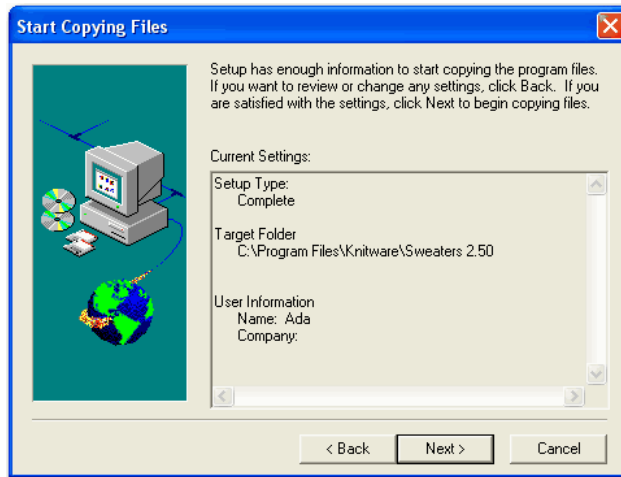
7. When you have decided on your destination location, click the **Next** button.

The **Select Program Folder** screen displays. The name that appears in the **Program Folders** area is the name that will appear in your Windows **Start > Programs** menu.

IMPORTANT: It is recommended that you accept the default program folder as shown on this screen. **Change this program folder name only if you are very familiar with using Windows.**

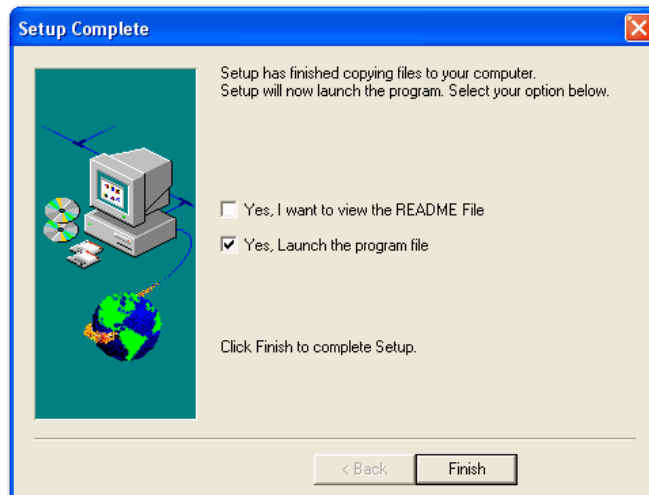


8. When you click the **Next** button to accept the Program Folder, you will see the screen to **Start Copying Files:**



9. Click the **Next** button to start copying the installation files into the destination folder.

When all of the installation files have been copied, the **Setup Complete** screen displays:



10. Do one of the following:

- ❑ If you want to view the README file, click the check box to place a check in it.
- ❑ If you want to skip viewing the README file, click the check box to clear it. [**Recommended**]

11. Do one of the following:

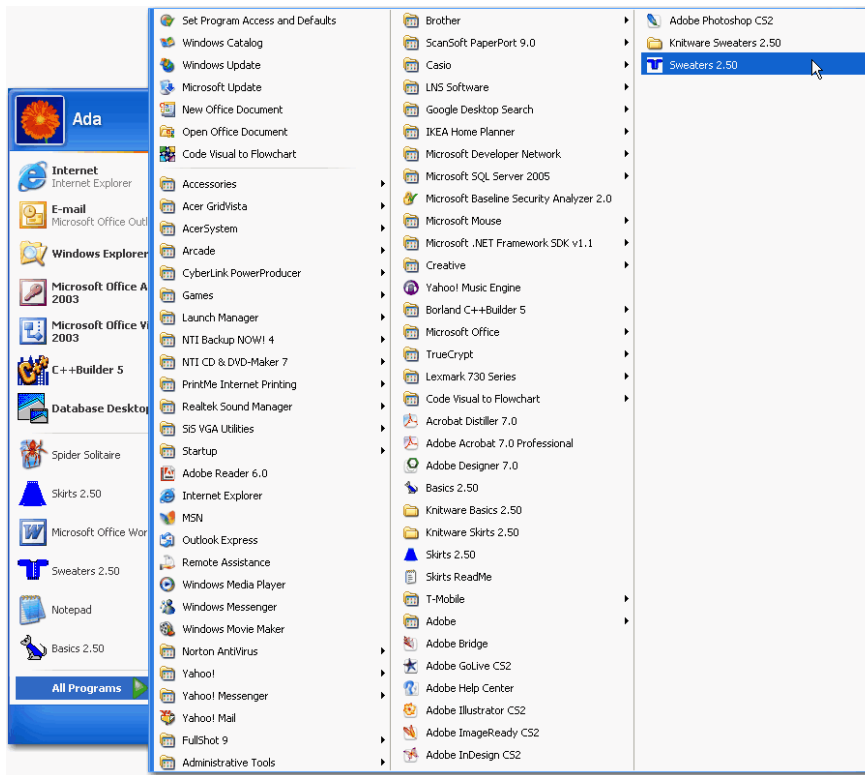
- ❑ If you want to launch (run) the program file, click the check box to place a check in it.
- ❑ If you do not want to run the program right now, click the check box to clear it. [**Recommended**]

12. If you wish to install another Knitware program, repeat the preceding procedure.

Starting the Knitware Program

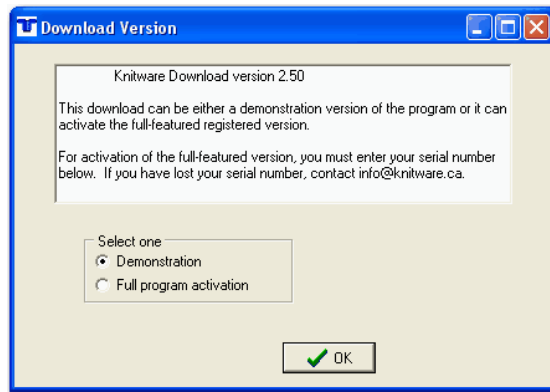
Your Knitware program may have started automatically when you finished the installation. If not:

1. From the Windows **Start > Programs** menu, find your Knitware program name and click it to start running it.



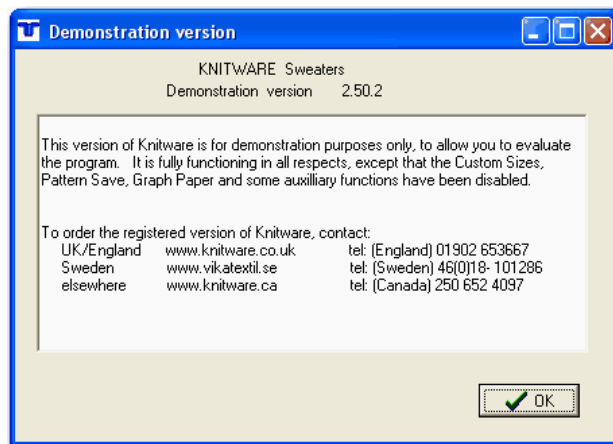
Every time a Knitware program starts, it checks to see if it has been assigned a serial number.

2. If no serial number has ever been entered, the program displays the **Download Version** screen to ask you if you wish to run in Demonstration mode, or if you wish to activate the Full Program by entering a serial number:



3. If you do not have a serial number, do the following:
 - a. Click the round “radio button” to select **Demonstration** mode.
 - a. Click **OK** to run the program in demonstration mode.

The **Demonstration Version** screen displays:

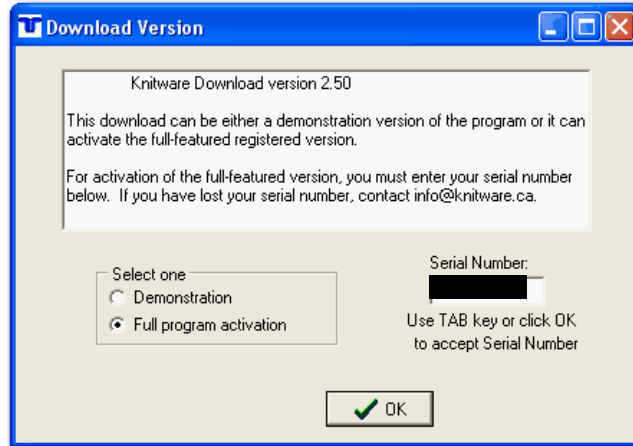


Proceed to [“Running Knitware in Demonstration Mode”](#) on page 25.

4. If you did purchase a license for the program and have received the serial number for that license, do the following:

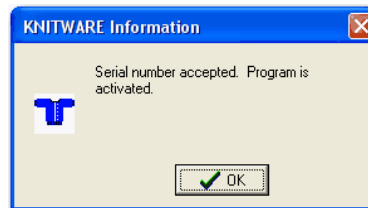
- a. Click the round "radio button" to select **Full Program Activation**.

The **Download Version** screen now changes and a data entry box appears to enter your **Serial Number**.



- b. Enter the serial number as provided to you by Great Knit Designs.
- c. Click **OK** to run the program to proceed .

When the Serial number is accepted, the following **Knitware Information** screen displays:



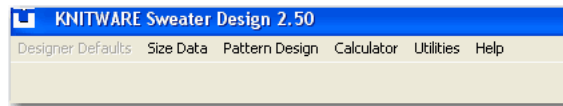
Click **OK** to proceed to run the program.

Note: You only have to enter your serial number once, as long as you do not reinstall the program. If you do reinstall, just run the program again and re-enter the serial number.

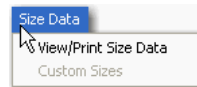
Running Knitware in Demonstration Mode

If a Knitware program is run in demonstration mode, certain functions of the program are disabled. The disabled functions will appear on the program menus as dimmed grayed text (also called “grayed-out” menu options).

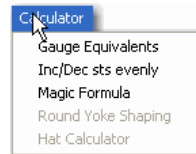
- You cannot define a Designer, as indicated by disabling the **Designer Defaults** menu in the main Knitware menu:



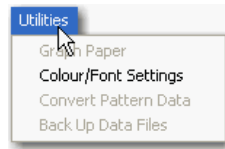
- On the **Size Data** menu, you are only allowed to **View/Print the Size Data** for the standard sizes. Demonstration mode does not allow you to create **Custom Sizes**:



- On the **Calculator** menu, you cannot run the **Hat Calculator** or the calculator for **Round Yoke Shaping** when you are running Knitware in demonstration mode:



- Demonstration mode also turns off most of the **Utilities**, allowing you only to change your **Colour/Font Settings**:



Moving Forward with Your Knitware Program

To move forward and start enjoying your Knitware program, please read the following books, available on your product CD or as downloads from the www.greatknitdesigns.com website:

- *Knitware Demo Tutorial* (also suitable for learning “full” programs)
- *Knitware Getting Started Guide*

IMPORTANT: For the most up-to-date documentation, always check the website download page at www.greatknitdesigns.com/download250.htm

Contact Information

Knitware™ is a product of Great Knit Designs, a division of Lai Associates, Inc.

For sales, support, or general information, please see www.great-knitdesigns.com/contactus.htm.

Great Knit Designs

Chapter 2: Uninstalling Knitware

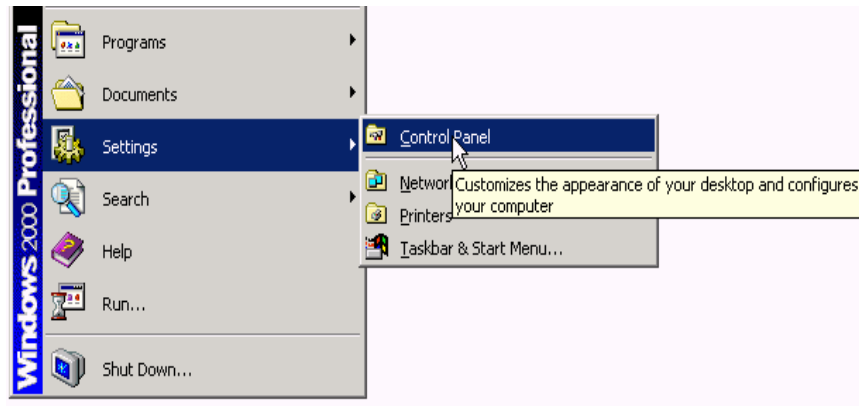
Occasionally, it is necessary to uninstall a Knitware program from your computer. This is accomplished with the Windows utility to remove programs.

Note: Before you uninstall the Knitware program, think about whether or not you want to keep any of the internally-saved data for custom sizes, patterns, or designers. If you do want to save this data, then you should copy the contents of the Knitware program's installation folder into some other folder before you uninstall the Knitware program.

Note: The process described in this chapter is identical for all versions of the Windows operating system.

To uninstall a Knitware program:

1. In the Windows **Start** menu, click **Settings > Control Panel**:



2. In the **Control Panel** display, click **Add/Remove Programs**:

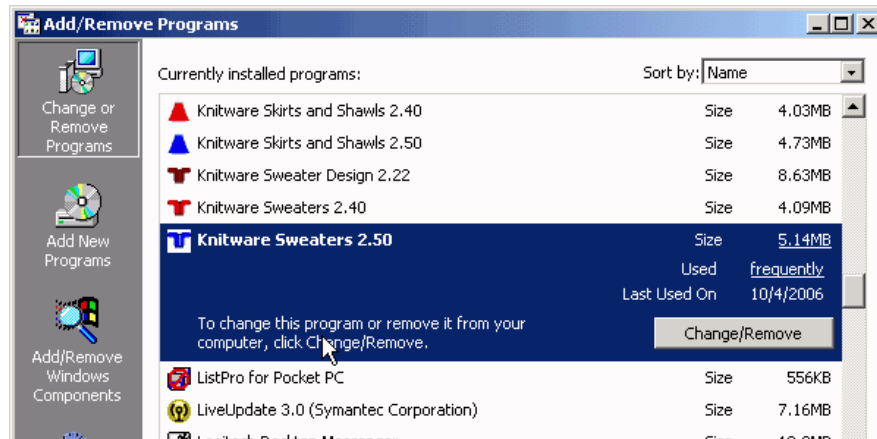


The **Add/Remove Programs** window displays.

Note: It may take a few seconds for it to display all the programs on your system.

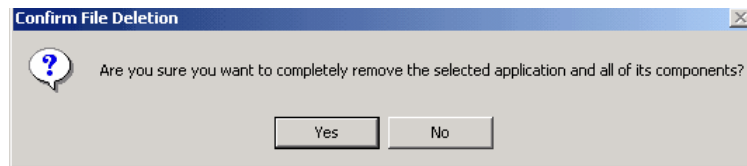
3. When all the programs have been listed, scroll down the list until you find the listing for the Knitware program that you want to uninstall, then select the program.

For example, if you want to uninstall the Sweaters program, you'd be doing something like this:



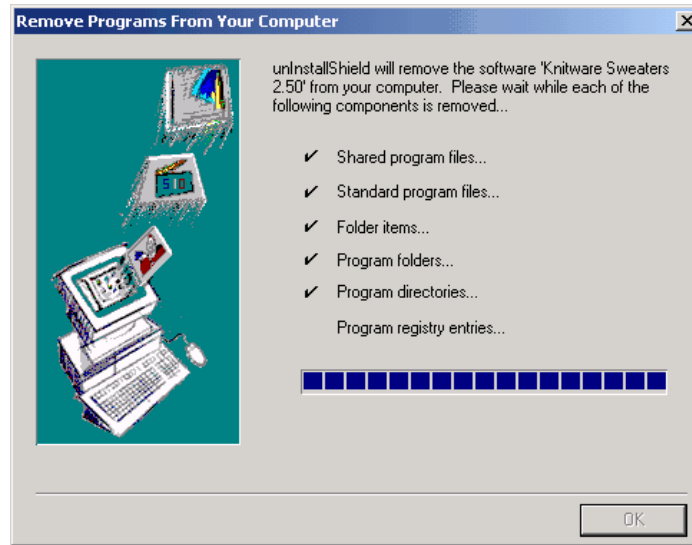
4. To uninstall the selected button, click the **Change/Remove** button.

Windows asks you to confirm that you want to remove the program with this message:



5. Click **Yes** to uninstall the Knitware program.

This displays the screen that is titled **Remove Programs From Your Computer**:



6. When the program is completely uninstalled, a message will appear and you can click the **OK** button.

Note: The installation folder for your Knitware program may still exist on the system, especially if you saved any patterns in .doc files that were stored in that folder.

You can leave the folder there, or delete the whole folder. If you delete the folder, this will delete any files still left in the folder, so copy those files someplace else if you still want to keep them.
